

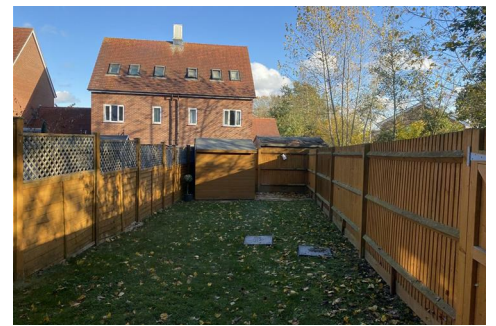


MARTINS ESTATES

SALES AND LETTINGS

69 High Street
Ashford
Kent
TN24 8SF

Tel: 01233 610 444



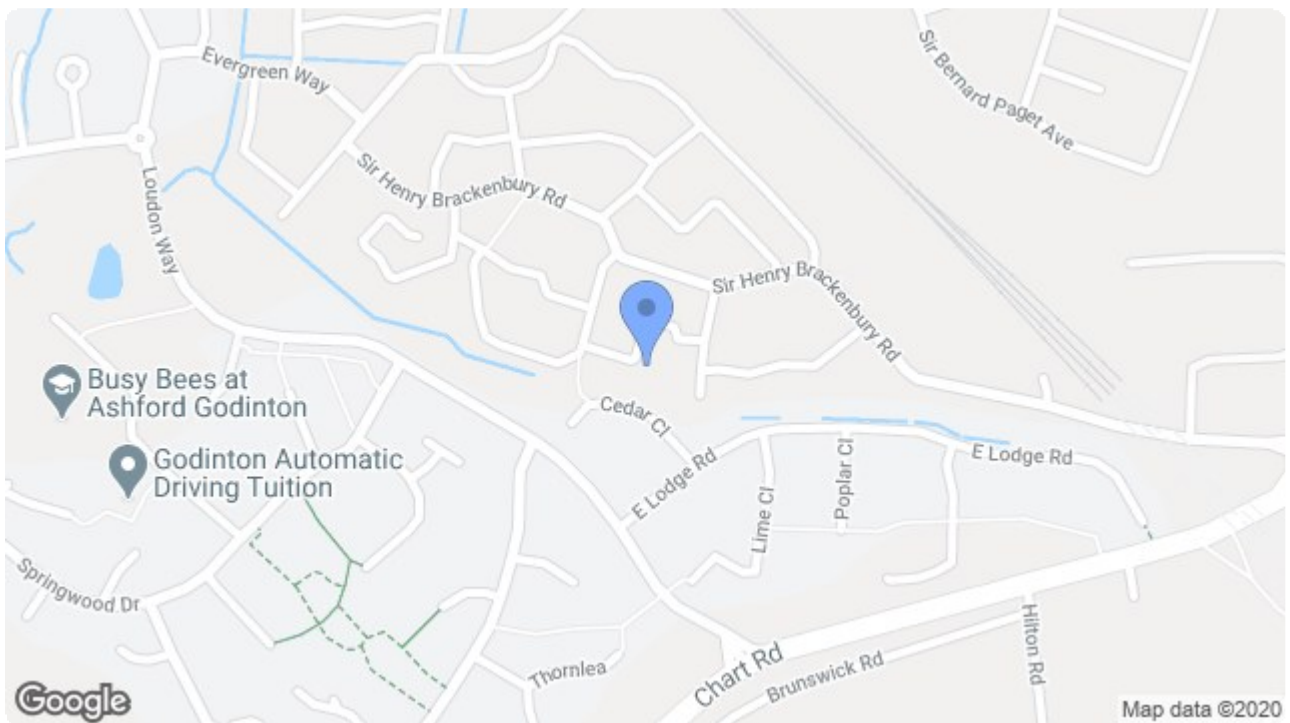
17 Roderick Kalberer Place, Ashford, Kent TN23 3FP

£1,150 PCM

A three bedroom end of terrace town house situated in Repton Park!

The property comprises entrance hallway, downstairs WC, kitchen with oven & hob, lounge with patio doors to rear garden. On the first floor there is two double bedrooms and a family bathroom. On the second floor there is a large double bedroom with an en-suite shower room. The property also benefits from gas central heating, double glazing throughout, rear garden and off road parking. The property is in excellent order and available to view.

17 Roderick Kalberer Place, Ashford, Kent TN23 3FP



Energy Efficiency Rating		Current	Potential
Very energy efficient - lower running costs			
(92 plus) A			
(81-91) B			
(69-80) C			
(55-68) D			
(39-54) E			
(21-38) F			
(1-20) G			
Not energy efficient - higher running costs			
England & Wales		EU Directive 2002/91/EC	

Environmental Impact (CO ₂) Rating		Current	Potential
Very environmentally friendly - lower CO ₂ emissions			
(92 plus) A			
(81-91) B			
(69-80) C			
(55-68) D			
(39-54) E			
(21-38) F			
(1-20) G			
Not environmentally friendly - higher CO ₂ emissions			
England & Wales		EU Directive 2002/91/EC	

69 HIGH STREET, ASHFORD, KENT TN24 8SF

Tel: 01233 610444

www.martinsestates.co.uk

email: sales@martinsestates.co.uk