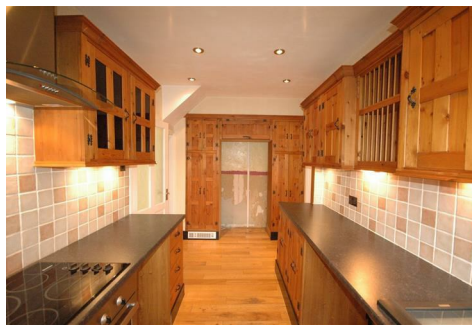




MARTINS
ESTATES
SALES AND LETTINGS

69 High Street
Ashford
Kent
TN24 8SF

Tel: 01233 610 444



44 Hunter Road, Ashford, Kent TN24 0RY

£895 PCM

A well present two bedroom end of terrace house situated in Willesborough!
The property comprises entrance hallway, lounge/ diner, fitted kitchen, study room, family bathroom, master bedroom, and a good sized second bedroom.
Externally the property benefits from a large rear garden with patio, decking and driveway parking for two cars. The property has gas central heating and double glazing, offered unfurnished. Unfortunately no pets allowed.

44 Hunter Road, Ashford, Kent TN24 0RY



Energy Efficiency Rating		
	Current	Potential
Very energy efficient - lower running costs		
(92-100) A		
(81-91) B		
(69-80) C		
(55-68) D		
(39-54) E		
(21-38) F		
(1-20) G		
Not energy efficient - higher running costs		
	47	64
England & Wales		
EU Directive 2002/91/EC		

Environmental Impact (CO ₂) Rating		
	Current	Potential
Very environmentally friendly - lower CO ₂ emissions		
(92 plus) A		
(81-91) B		
(69-80) C		
(55-68) D		
(39-54) E		
(21-38) F		
(1-20) G		
Not environmentally friendly - higher CO ₂ emissions		
	42	61
England & Wales		
EU Directive 2002/91/EC		

69 HIGH STREET, ASHFORD, KENT TN24 8SF

Tel: 01233 610444

www.martinsestates.co.uk

email: sales@martinsestates.co.uk