

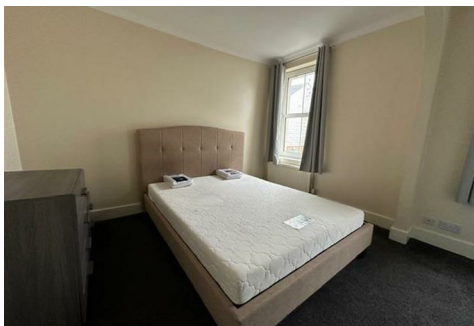


MARTINS ESTATES

SALES AND LETTINGS

Martins Estates Sales And Lettings High Street
Ashford
Kent
TN24 8SF

Tel: 01233610444

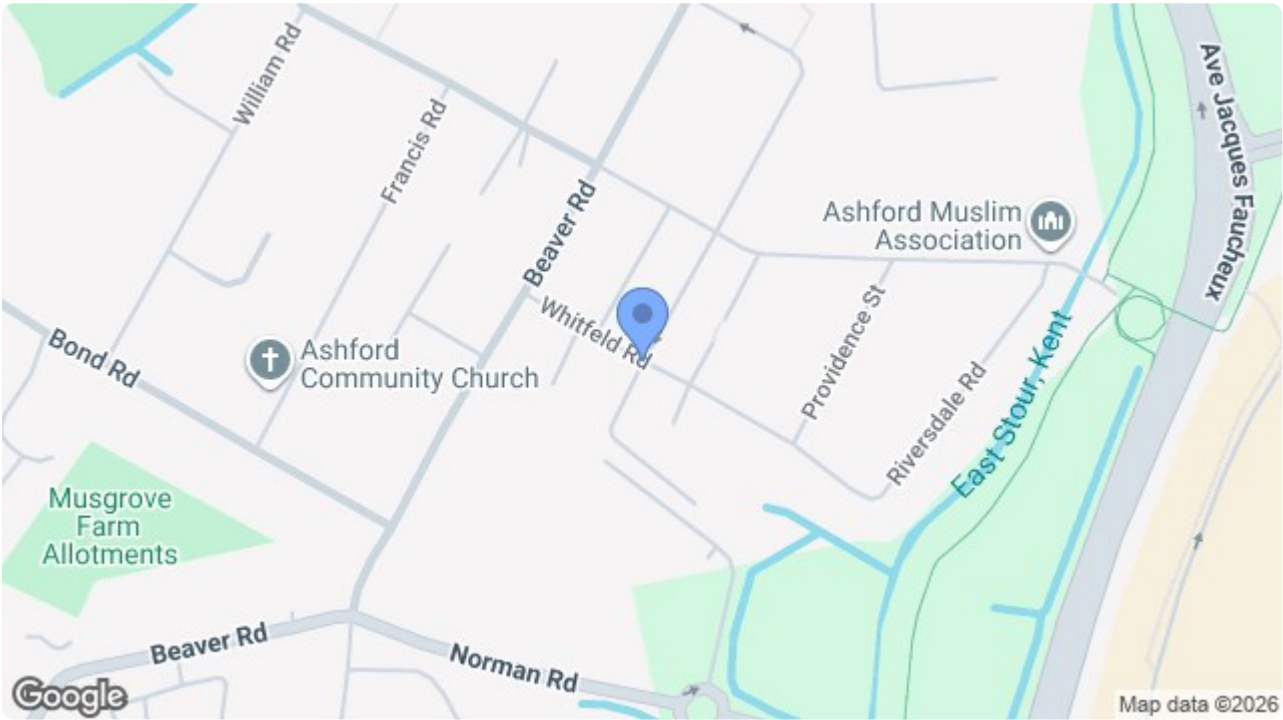


Room D, 53 Whitfeld Road, Ashford, Kent TN23 7TS

£540 (From) Per Month

HOUSE SHARE

There are Two rooms available on the first floor. It is close to the International Passenger Station and Ashford town centre. The rooms have new carpets and bills are included in the rent. The smaller room is £550 per month deposit £634 and the larger room £595 deposit £686. Both rooms are furnished with king size beds, wardrobe, chest of drawers, bedside table, mini fridge freezer and blackout curtains. The kitchen and bathroom are shared with the occupants of two other rooms. All bills included in rent. Will suit single professionals. Pets not accepted.



Energy Efficiency Rating		
	Current	Potential
Very energy efficient - lower running costs		
(92 plus) A		
(81-91) B		
(69-80) C		
(55-68) D		
(39-54) E		
(21-38) F		
(1-20) G		
Not energy efficient - higher running costs		
	41	65
England & Wales	EU Directive 2002/91/EC	

Environmental Impact (CO ₂) Rating		
	Current	Potential
Very environmentally friendly - lower CO ₂ emissions		
(92 plus) A		
(81-91) B		
(69-80) C		
(55-68) D		
(39-54) E		
(21-38) F		
(1-20) G		
Not environmentally friendly - higher CO ₂ emissions		
England & Wales	EU Directive 2002/91/EC	

69 HIGH STREET, ASHFORD, KENT TN24 8SF

Tel: 01233 610444 www.martinestates.co.uk email: sales@martinestates.co.uk



Martine Estates Property Management Ltd
Registered in England and Wales No. 10031401
Registered office: 69 High Street, Ashford, Kent, TN24 8SF
Martins Wilkins T/A Martins Estates Sales and Lettings