

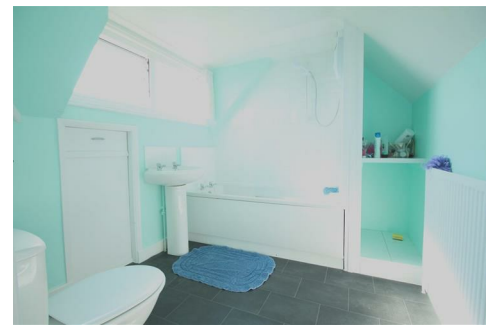


MARTINS ESTATES

SALES AND LETTINGS

69 High Street
Ashford
Kent
TN24 8SF

Tel: 01233 610 444



14B Albert Road, Ashford, Kent TN24 8NY

£600 PCM

A very large double bedsit situated within walking distance to the Town Centre and International Passenger Station. The room is on the first floor at the front of the property overlooking the front garden and offers a large bay window with access to a shared bathroom and shared kitchen. The room was recently refurbished including new carpets. On road parking available by permit from Ashford Borough Council. Available now!

14B Albert Road, Ashford, Kent TN24 8NY



Energy Efficiency Rating		Current	Potential
<i>Very energy efficient - lower running costs</i>			
(92 plus) A			
(81-91) B			
(69-80) C			
(55-68) D			
(39-54) E			
(21-38) F			
(1-20) G			
<i>Not energy efficient - higher running costs</i>			
		51	77
England & Wales		EU Directive 2002/91/EC	

Environmental Impact (CO ₂) Rating		Current	Potential
<i>Very environmentally friendly - lower CO₂ emissions</i>			
(92 plus) A			
(81-91) B			
(69-80) C			
(55-68) D			
(39-54) E			
(21-38) F			
(1-20) G			
<i>Not environmentally friendly - higher CO₂ emissions</i>			
		43	76
England & Wales		EU Directive 2002/91/EC	

69 HIGH STREET, ASHFORD, KENT TN24 8SF

Tel: 01233 610444 www.martinsstates.co.uk email: sales@martinsstates.co.uk



Martins Estates Property Management Ltd
 Registered in England and Wales No. 10031401
 Registered office: 69 High Street, Ashford, Kent, TN24 8SF
 Martins Wilkins T/A Martins Estates Sales and Lettings