



# MARTINS ESTATES

SALES AND LETTINGS

Martins Estates Sales And Lettings High Street  
Ashford  
Kent  
TN24 8SF

Tel: 01233610444



**1 Wheler Road, Ashford, Kent TN27 0JU**

**£1,500 Per Month**

A good sized three bedroom semi detached house with off road parking and garage and situated in this popular village and close to all amenities. The accommodation comprises entrance hall with stairs to first floor and doors to all ground floor accommodation. There is a large lounge diner and separate kitchen with range of units. On the first floor there are three bedroom and a family bathroom. The property has been refurbished throughout and is presented in excellent order, benefitting from new carpets, kitchen and bathroom.

**1 Wheler Road, Ashford, Kent TN27 0JU**

# Wheler Road, Charing, TN27

Approximate Gross Internal Area = 87.6 sq m / 943 sq ft

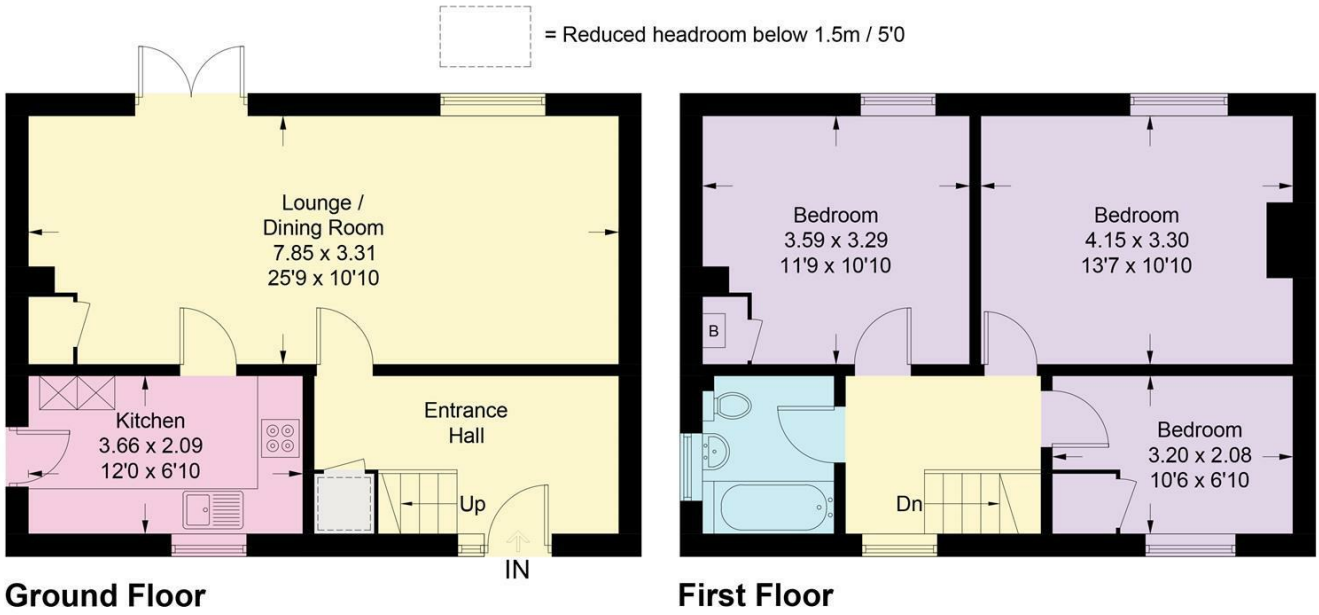
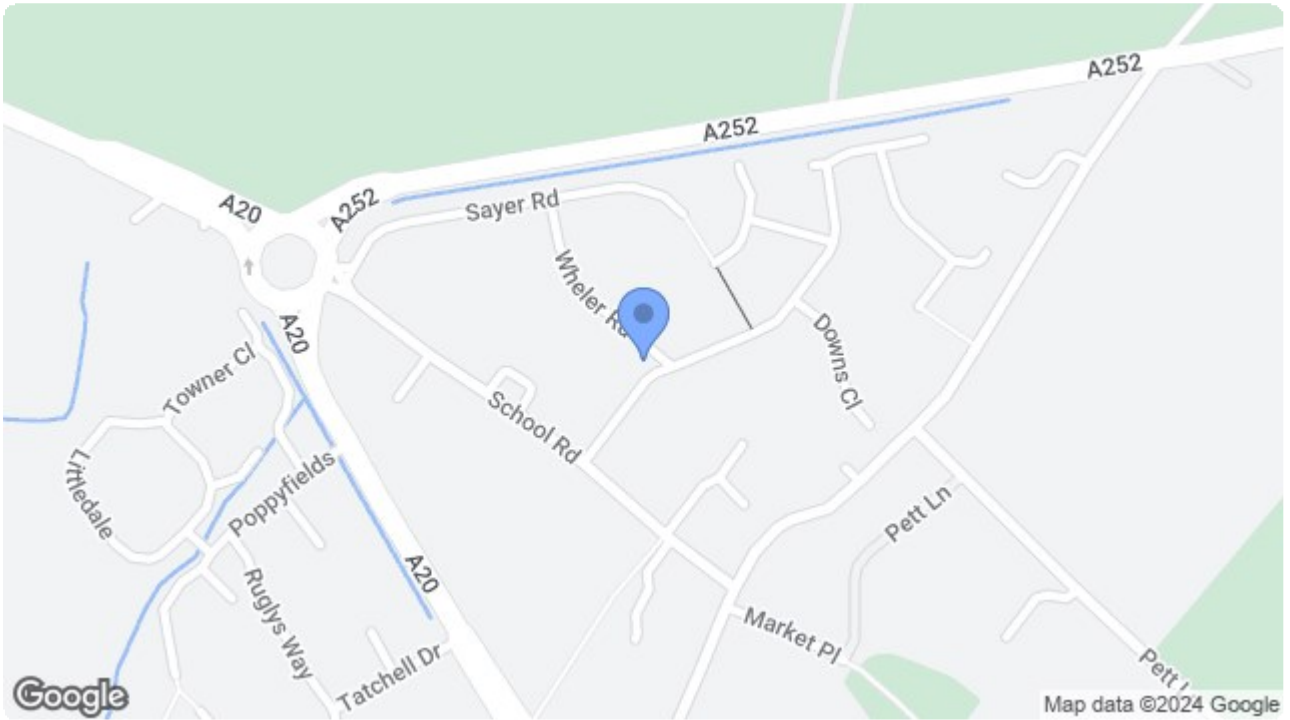


Illustration for identification purposes only, measurements are approximate, not to scale. floorplansUsketch.com © (ID1057645)



Energy Efficiency Rating		Current	Potential
Very energy efficient - lower running costs			
(92 plus) <b>A</b>			
(81-91) <b>B</b>			
(69-80) <b>C</b>			
(55-68) <b>D</b>			
(39-54) <b>E</b>			
(21-38) <b>F</b>			
(1-20) <b>G</b>			
Not energy efficient - higher running costs			
<b>England &amp; Wales</b>		EU Directive 2002/91/EC	

Environmental Impact (CO <sub>2</sub> ) Rating		Current	Potential
Very environmentally friendly - lower CO <sub>2</sub> emissions			
(92 plus) <b>A</b>			
(81-91) <b>B</b>			
(69-80) <b>C</b>			
(55-68) <b>D</b>			
(39-54) <b>E</b>			
(21-38) <b>F</b>			
(1-20) <b>G</b>			
Not environmentally friendly - higher CO <sub>2</sub> emissions			
<b>England &amp; Wales</b>		EU Directive 2002/91/EC	

69 HIGH STREET, ASHFORD, KENT TN24 8SF

Tel: 01233 610444 [www.martinsstates.co.uk](http://www.martinsstates.co.uk) email: [sales@martinsstates.co.uk](mailto:sales@martinsstates.co.uk)



Martins Estates Property Management Ltd  
Registered in England and Wales No. 10031401  
Registered office: 69 High Street, Ashford, Kent, TN24 8SF  
Martins Wilkins T/A Martins Estates Sales and Lettings