

MARTINS ESTATES

SALES AND LETTINGS

Martins Estates Sales And Lettings High Street
Ashford
Kent
TN24 8SF

Tel: 01233610444



6 Elham Court. Matfield Close, Ashford, TN23 5FE

£1,100 Per Month

Presented in superb order.

The accommodation comprises a double-aspect lounge with doors opening to a sunny aspect balcony overlooking the playing fields.

The lounge is open-plan to the modern fitted kitchen, which has a range of matching wall and base units, space for a freestanding fridge freezer, space and plumbing for a washing machine, and an integrated electric oven with gas hob and extractor above.

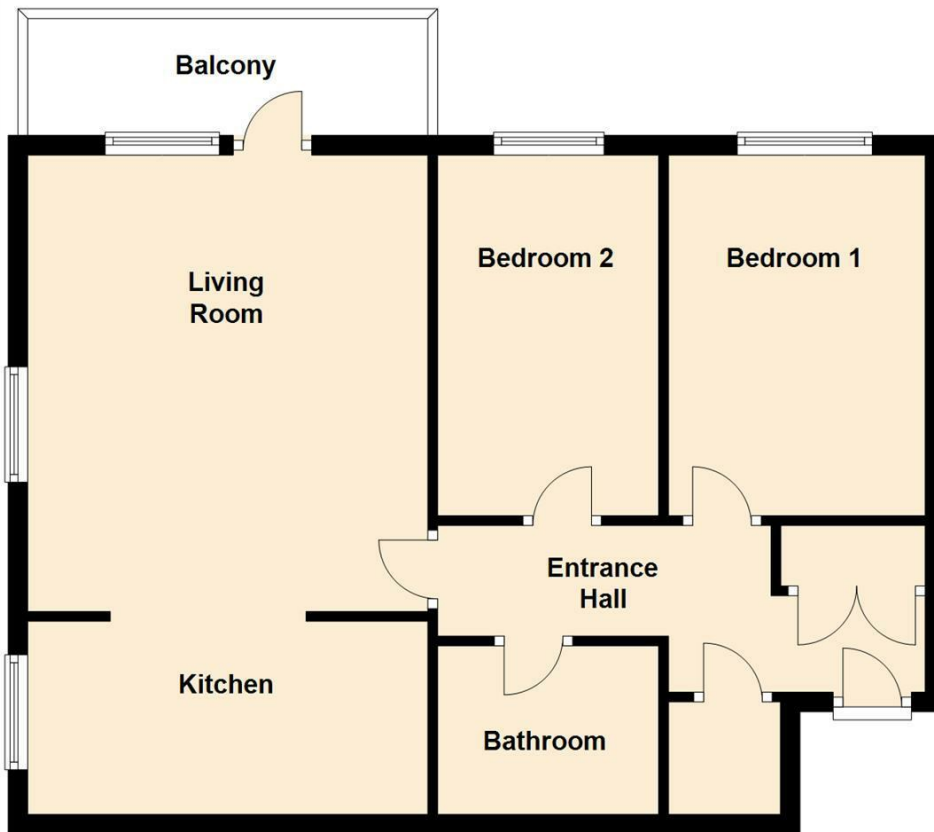
There are two bedrooms and a bathroom with a matching white suite comprising a bath with shower over, WC, and pedestal-mounted wash hand basin.

There are several very useful purpose-built storage cupboards within the apartment.

The property has double glazing and central heating.

6 Elham Court. Matfield Close, Ashford, TN23 5FE

First Floor



Energy Efficiency Rating		Current	Potential
Very energy efficient - lower running costs			
(92 plus) A			
(81-91) B			
(69-80) C			
(55-68) D			
(39-54) E			
(21-38) F			
(1-20) G			
Not energy efficient - higher running costs			
		83	83
England & Wales		EU Directive 2002/91/EC	

Environmental Impact (CO ₂) Rating		Current	Potential
Very environmentally friendly - lower CO ₂ emissions			
(92 plus) A			
(81-91) B			
(69-80) C			
(55-68) D			
(39-54) E			
(21-38) F			
(1-20) G			
Not environmentally friendly - higher CO ₂ emissions			
England & Wales		EU Directive 2002/91/EC	

69 HIGH STREET, ASHFORD, KENT TN24 8SF

Tel: 01233 610444 www.martinsstates.co.uk email: sales@martinsstates.co.uk



Martins Estates Property Management Ltd
Registered in England and Wales No. 10031401
Registered office: 69 High Street, Ashford, Kent, TN24 8SF
Martins Wilkins T/A Martins Estates Sales and Lettings