



# MARTINS ESTATES

SALES AND LETTINGS

Martins Estates Sales And Lettings High Street  
Ashford  
Kent  
TN24 8SF

**Tel:** 01233610444



**2 Cheviot Way, Ashford, Kent TN24 8RF**

**£775 Per Month**

2 bedroom ground floor flat close to the town centre and local amenities. The property comprises: entrance hallway, 2 bedrooms, lounge, kitchen, family bathroom and also benefits from an outside storage cupboard and garage. Available now!

Pets not accepted

**2 Cheviot Way, Ashford, Kent TN24 8RF**

Cheviot Way, Ashford, TN24

Approximate Gross Internal Area = 59.5 sq m / 640 sq ft

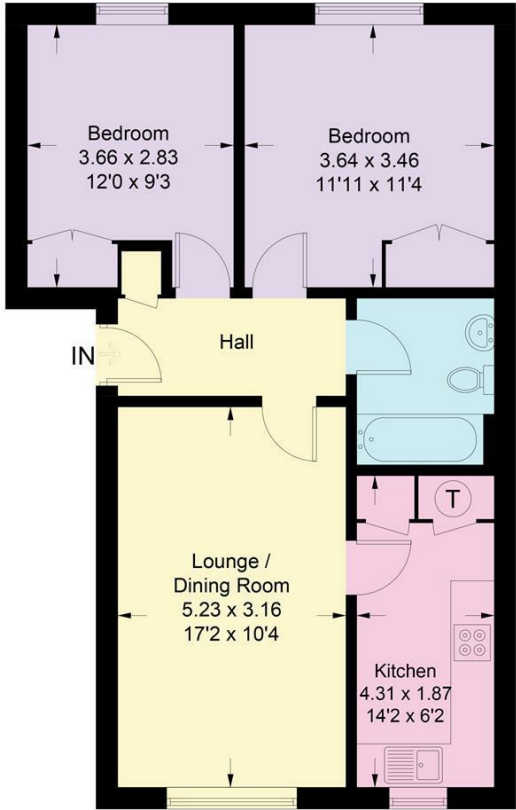
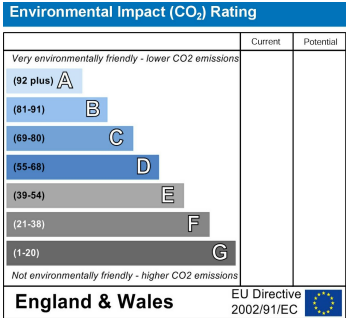
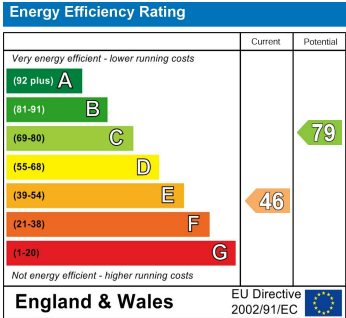
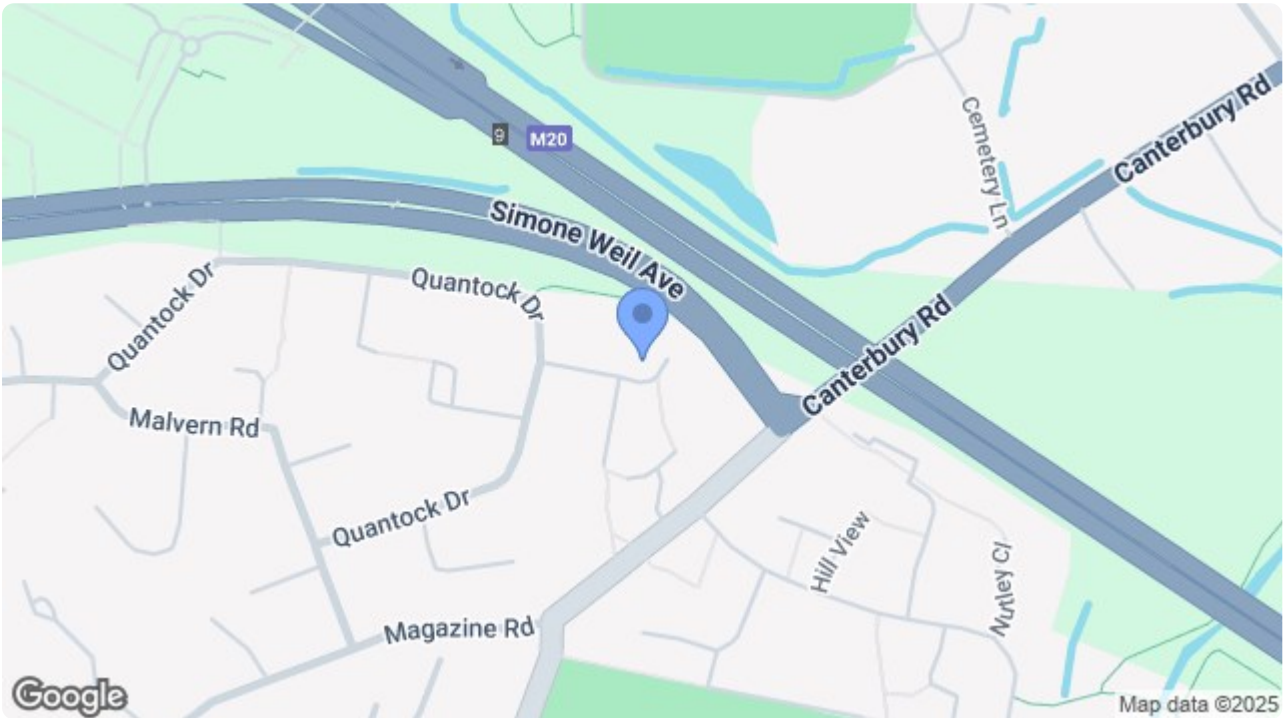


Illustration for identification purposes only, measurements are approximate, not to scale. floorplansUsketch.com © (ID1069736)



69 HIGH STREET, ASHFORD, KENT TN24 8SF

Tel: 01233 610444 [www.martins Estates.co.uk](http://www.martins Estates.co.uk) email: [sales@martins Estates.co.uk](mailto:sales@martins Estates.co.uk)



Martine Estates Property Management Ltd  
Registered in England and Wales No.10031401  
Registered office: 69 High Street, Ashford, Kent, TN24 8SF  
Martins Wilkins T/A Martins Estates Sales and Lettings