



MARTINS ESTATES

SALES AND LETTINGS

Martins Estates Sales And Lettings High Street
Ashford
Kent
TN24 8SF

Tel: 01233610444



5 Lamberhurst Mews, Ashford, Kent TN23 5TT

£850

*** 2 DOUBLE BEDROOMS * 3 PARKING SPACES ***

This lovely two bed terrace offers light and airy accommodation.

Accommodation comprises an entrance hall, modern fitted kitchen with work surfaces to three walls with a range of wall and base units.

There is a space for a washing machine and full height fridge freezer.

There is a ground floor cloakroom, under-stairs storage and lounge/diner with french doors opening onto the garden.

On the first floor, there are two double bedrooms and a family bathroom with matching white suite comprising of bath with shower over, WC and pedestal wash hand basin.

To the exterior at the front of the property is a driveway providing parking for one vehicle, an additional benefit to this property is the additional two allocated parking spaces.

To the rear the garden is laid principally to lawn with a patio area and substantial shed on hard standing providing useful storage space.

Pets not accepted.

5 Lamberhurst Mews, Ashford, Kent TN23 5TT

Ground Floor WC

Kitchen

9'8" x 6'0" (2.95m x 1.83m)

Lounge Diner

15'6" x 9'11" (4.72m x 3.02m)

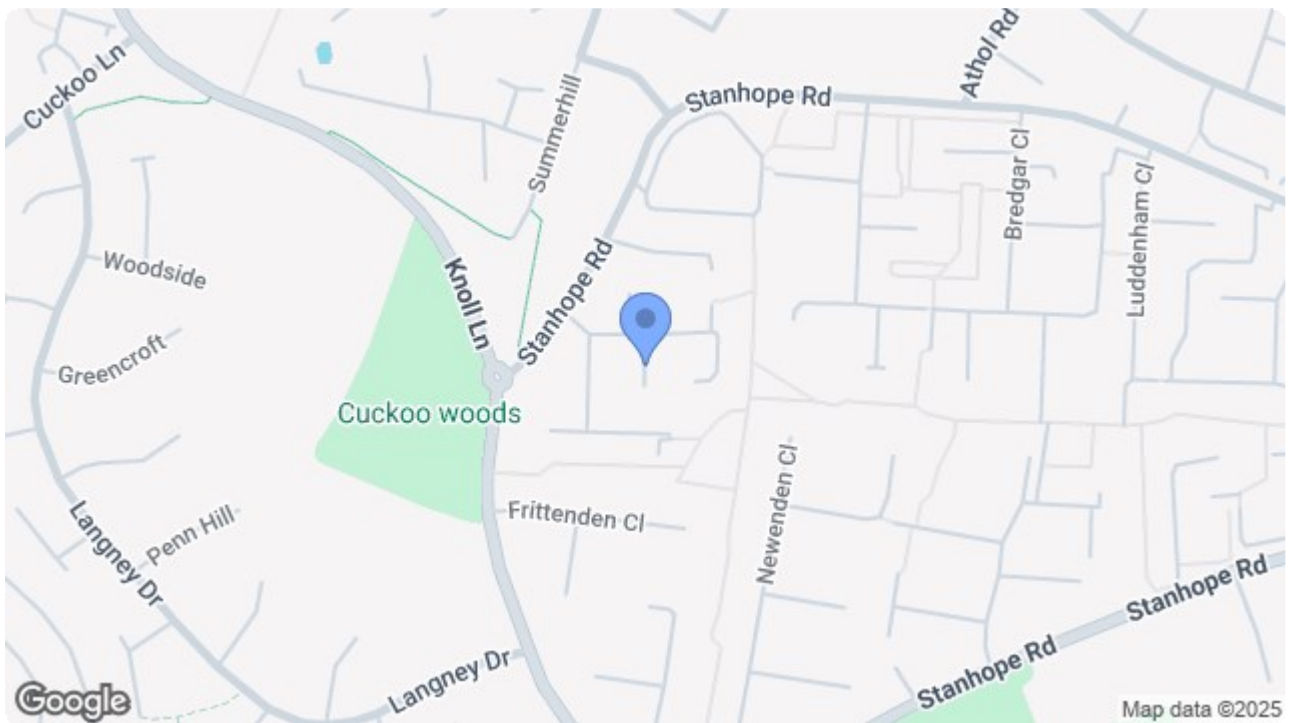
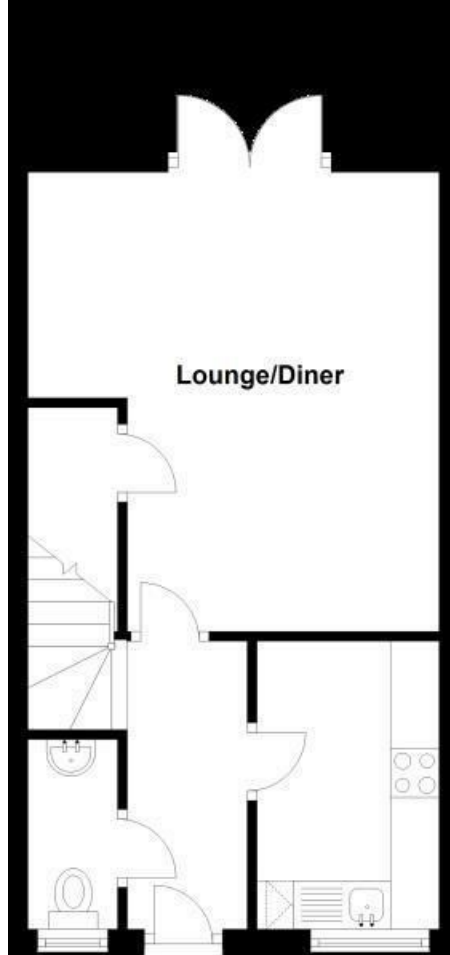
Bedroom 1


13'8" x 9'9" (4.17m x 2.97m)


Bedroom 2

13'8" x 7'7" (4.17m x 2.31m)

Bathroom



Energy Efficiency Rating		Current	Potential
Very energy efficient - lower running costs			
(92 plus) A			92
(81-91) B			
(69-80) C		76	
(55-68) D			
(39-54) E			
(21-38) F			
(1-20) G			
Not energy efficient - higher running costs			
England & Wales		EU Directive 2002/91/EC.	

Environmental Impact (CO ₂) Rating	
Current	Potential
Very environmentally friendly - lower CO ₂ emissions	
(92 plus) A	
(81-91) B	
(69-80) C	
(55-68) D	
(39-54) E	
(21-38) F	
(1-20) G	
Not environmentally friendly - higher CO ₂ emissions	
England & Wales	
EU Directive 2002/91/EC	
	

69 HIGH STREET, ASHFORD, KENT TN24 8SF

Tel: 01233 610444 www.martinesestates.co.uk email: sales@martinesestates.co.uk



Martine Estates Property Management Ltd
Registered in England and Wales No. 10031401
Registered office: 69 High Street, Ashford, Kent, TN24 8SF
Martins Wilkins T/A Martins Estates Sales and Lettings