

# MARTINS ESTATES

SALES AND LETTINGS

Martins Estates Sales And Lettings High Street  
Ashford  
Kent  
TN24 8SF

Tel: 01233610444



## 6 Elham Court. Matfield Close, Ashford, TN23 5FE

**£1,100 Per Month**

Presented in superb order.

The accommodation comprises a double-aspect lounge with doors opening to a sunny aspect balcony overlooking the playing fields.

The lounge is open-plan to the modern fitted kitchen, which has a range of matching wall and base units, space for a freestanding fridge freezer, space and plumbing for a washing machine, and an integrated electric oven with gas hob and extractor above.

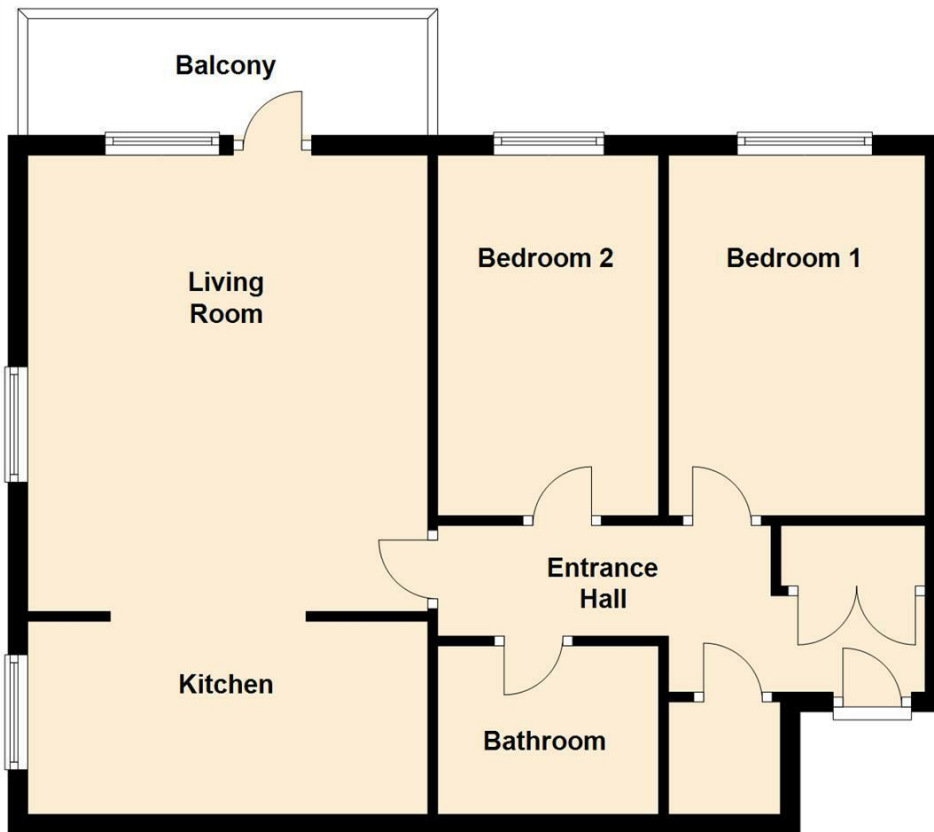
There are two bedrooms and a bathroom with a matching white suite comprising a bath with shower over, WC, and pedestal-mounted wash hand basin.

There are several very useful purpose-built storage cupboards within the apartment.

The property has double glazing and central heating.

**6 Elham Court. Matfield Close, Ashford, TN23 5FE**

# First Floor



Energy Efficiency Rating		Current	Potential
Very energy efficient - lower running costs			
(92 plus) A			
(81-91) B		82	82
(69-80) C			
(55-68) D			
(39-54) E			
(21-38) F			
(1-20) G			
Not energy efficient - higher running costs			
England & Wales		EU Directive 2002/91/EC	

Environmental Impact (CO <sub>2</sub> ) Rating		Current	Potential
Very environmentally friendly - lower CO <sub>2</sub> emissions			
(92 plus) A			
(81-91) B			
(69-80) C			
(55-68) D			
(39-54) E			
(21-38) F			
(1-20) G			
Not environmentally friendly - higher CO <sub>2</sub> emissions			
England & Wales		EU Directive 2002/91/EC	

69 HIGH STREET, ASHFORD, KENT TN24 8SF

Tel: 01233 610444 [www.martinsstates.co.uk](http://www.martinsstates.co.uk) email: [sales@martinsstates.co.uk](mailto:sales@martinsstates.co.uk)



Martins Estates Property Management Ltd  
 Registered in England and Wales No. 10031401  
 Registered office: 69 High Street, Ashford, Kent, TN24 8SF  
 Martins Wilkins T/A Martins Estates Sales and Lettings