

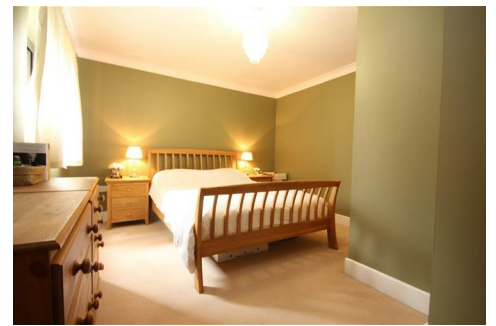


MARTINS ESTATES

SALES AND LETTINGS

69 High Street
Ashford
Kent
TN24 8SF

Tel: 01233 610 444



15 Wallis Place, Maidstone, Kent ME16 8FB

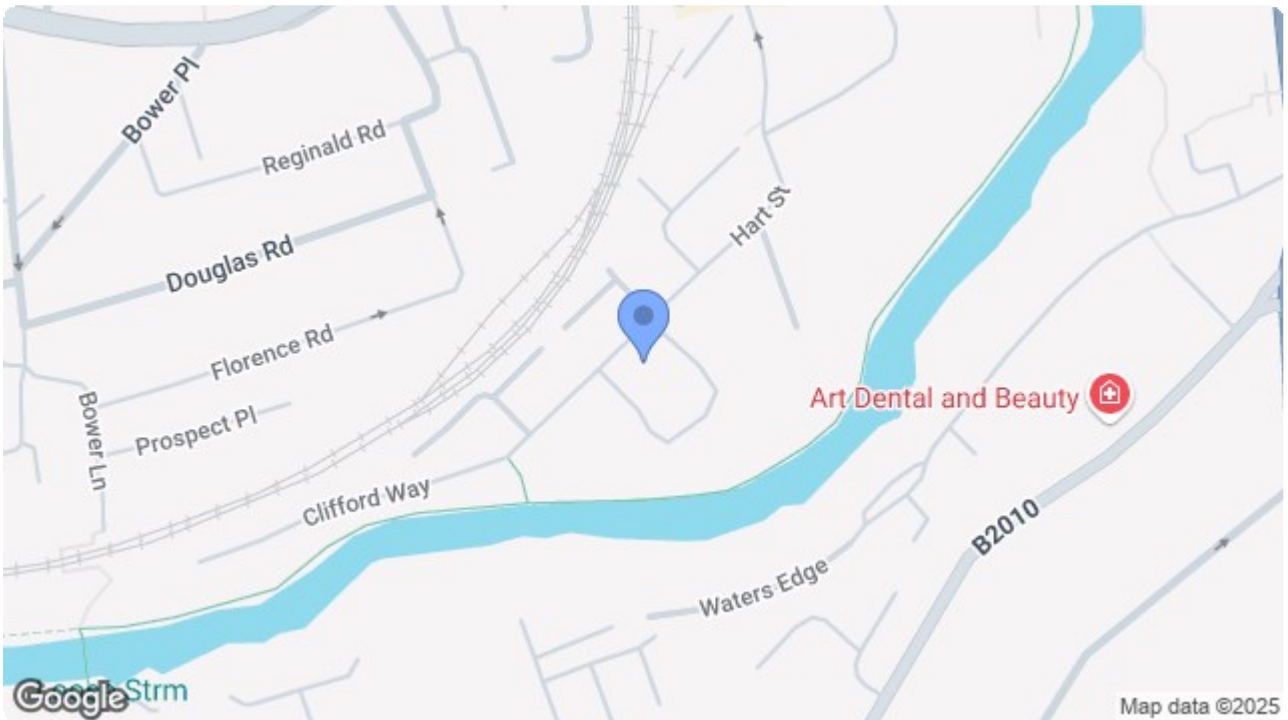
£1,075 PCM

Welcome to this charming flat located at Wallis Place, nestled in the heart of Maidstone, Kent. This delightful property offers a perfect blend of comfort and convenience, making it an ideal choice for individuals or couples seeking a cosy home.

Upon entering, you will find a well-appointed reception room that provides a warm and inviting atmosphere, perfect for relaxation or entertaining guests. The flat features a spacious bedroom, designed to be a tranquil retreat, ensuring a restful night's sleep.

The location of this property is particularly advantageous, as it is situated within easy reach of local amenities, including shops, cafes, and parks. Maidstone itself boasts a rich history and a vibrant community, offering a variety of leisure activities and cultural experiences.

15 Wallis Place, Maidstone, Kent ME16 8FB



Energy Efficiency Rating		Current	Potential
<i>Very energy efficient - lower running costs</i>			
(92 plus) A			
(81-91) B			
(69-80) C			
(55-68) D			
(39-54) E			
(21-38) F			
(1-20) G			
<i>Not energy efficient - higher running costs</i>			
		81	81
England & Wales		EU Directive 2002/91/EC	

Environmental Impact (CO ₂) Rating		Current	Potential
<i>Very environmentally friendly - lower CO₂ emissions</i>			
(92 plus) A			
(81-91) B			
(69-80) C			
(55-68) D			
(39-54) E			
(21-38) F			
(1-20) G			
<i>Not environmentally friendly - higher CO₂ emissions</i>			
		85	85
England & Wales		EU Directive 2002/91/EC	

69 HIGH STREET, ASHFORD, KENT TN24 8SF

Tel: 01233 610444 www.martins Estates.co.uk email: sales@martins Estates.co.uk



Martins Estates Property Management Ltd
 Registered in England and Wales No. 10031401
 Registered office: 69 High Street, Ashford, Kent, TN24 8SF
 Martins Wilkins T/A Martins Estates Sales and Lettings