



MARTINS ESTATES

SALES AND LETTINGS

Martins Estates Sales And Lettings High Street
Ashford
Kent
TN24 8SF

Tel: 01233610444



72 Adams Drive, Ashford, TN24 0FW

Asking Price £270,000

This stunning modern terraced home is situated in the popular Willesborough area of Ashford providing excellent links to the town and station as well as local amenities. Well presented both inside and out, it's a perfect starter home with luxury grey carpeting which flows the whole way through. Off the good sized hallway there is a ground floor cloakroom. The living/dining room overlooks the garden and has access to a large under stair storage cupboard. The modern kitchen has an excellent range of wall and base units with integrated appliances including an inset electric four burner hob with extractor fan over and stainless steel back plate, electric oven, washer/dryer and fridge/freezer. A wall mounted cupboard houses the gas boiler. On the first floor there are two double bedrooms. The master bedroom has an en-suite shower room with an immaculate white suite. The bathroom has a white suite with a mixer tap and wall mounted shower attachment over the bath. Outside the garden is enclosed and well maintained. The current owners have extended the paving to enlarge the entertaining area. The remainder of the garden is laid to lawn. The house comes with an allocated parking bay. There is a useful lockable bin/storage cupboard to the front of the property.

72 Adams Drive, Ashford, TN24 0FW

Sitting/Dining Room

19'10"x 11'10" (6.05x 3.62)

Kitchen

9'7" x 7'7" (2.94 x 2.32)

Bedroom One

11'10" x 11'10" (3.63 x 3.62)

Bedroom Two

11'10" x 9'11" (3.62 x 3.04)

Adams Drive, Ashford, TN24

Approximate Gross Internal Area = 77.1 sq m / 830 sq ft

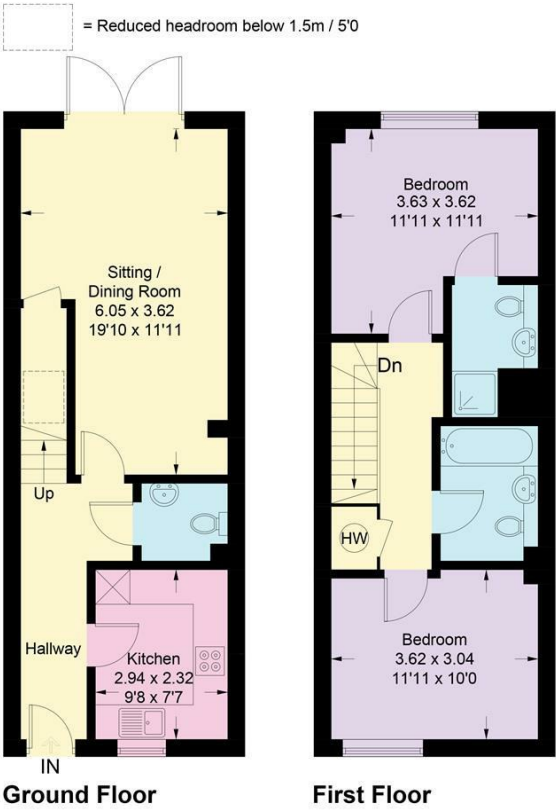
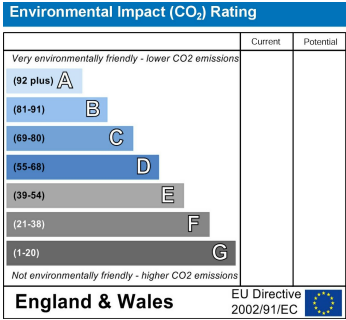
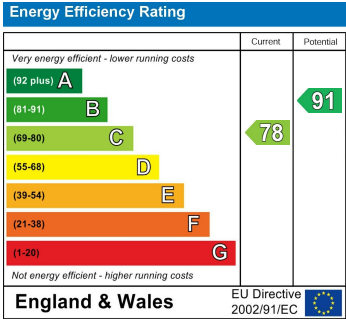
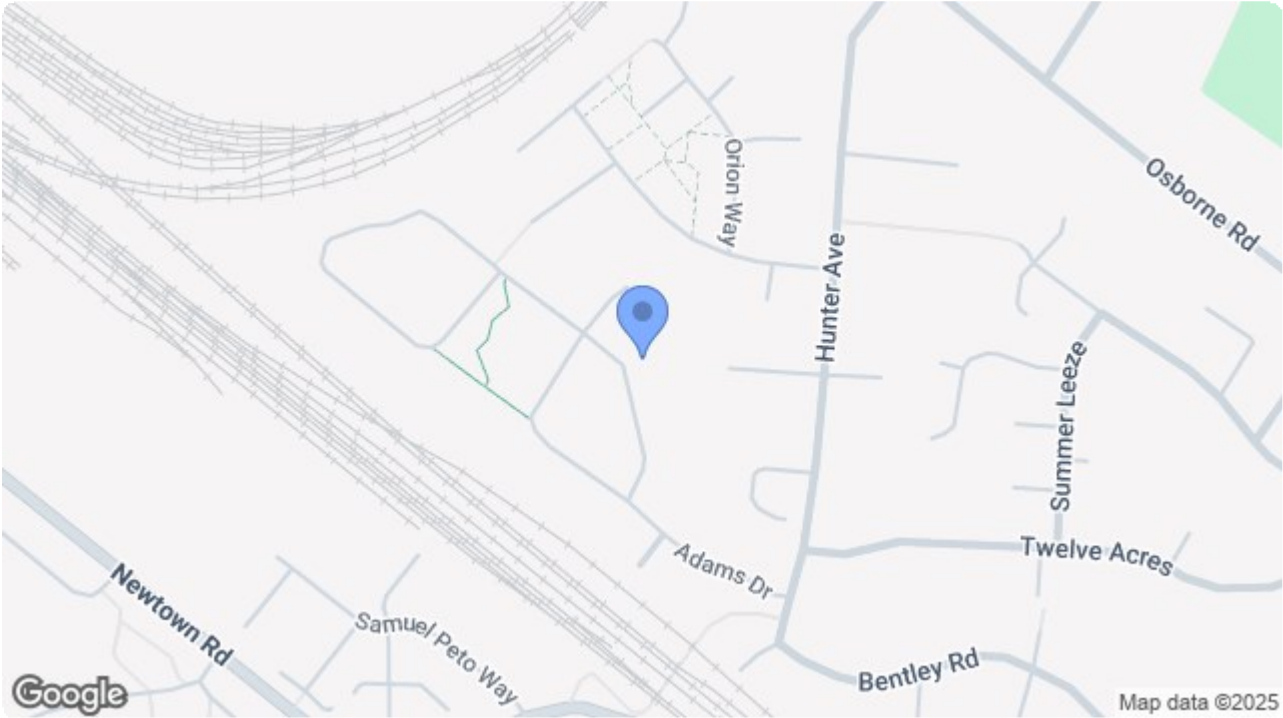


Illustration for identification purposes only, measurements are approximate, not to scale. Fourlabs.co © (ID1231959)



69 HIGH STREET, ASHFORD, KENT TN24 8SF

Tel: 01233 610444 www.martinsstates.co.uk email: sales@martinsstates.co.uk



Martine Estates Property Management Ltd
Registered in England and Wales No. 10031401
Registered office: 69 High Street, Ashford, Kent, TN24 8SF
Martins Wilkins T/A Martins Estates Sales and Lettings