



MARTINS ESTATES

SALES AND LETTINGS

Martins Estates Sales And Lettings High Street
Ashford
Kent
TN24 8SF

Tel: 01233610444



15 The Pasture, Ashford, TN24 9ND

Offers In Excess Of £375,000

Open Day 13th September. By appointment only, please call 01233 610444 to book a slot.

Beautifully Presented Three-Bedroom Semi-Detached Home in Popular Kennington

This immaculately presented three-bedroom semi-detached property is located in a highly sought-after part of Kennington, close to local shops, amenities, and convenient bus routes.

Offering generous living accommodation, a well-designed low-maintenance garden, and excellent off-road parking, this home is perfect for families, couples, or anyone seeking a move-in-ready property in a great location.

Inside, the property boasts a stylish kitchen with ample space for a washing machine, dishwasher, and full-height fridge freezer. The kitchen is well-equipped with fitted oven, hob, and extractor fan, complemented by work surfaces along two walls and a breakfast bar for casual dining.

The modern family bathroom is fitted with a contemporary P-shaped bath and overhead shower, complete with both a drench head and rinse head for a spa-like experience.

Accommodation includes two well-proportioned double bedrooms and a third single bedroom, making this a versatile home that can easily accommodate guests, a home office, or a nursery.

Outside, the rear garden is fully enclosed, providing both privacy and security, and features a lovely patio area ideal for entertaining or relaxing.

15 The Pasture, Ashford, TN24 9ND

Kitchen/Dining Room

17'11" x 8'11" (5.48 x 2.73)

Sitting Room

13'11" x 11'11" (4.26 x 3.65)

Bedroom One

10'0" x 9'10" (3.06 x 3.02)

Bedroom Two

13'1" x 10'0" (3.99 x 3.07)


Bedroom Three

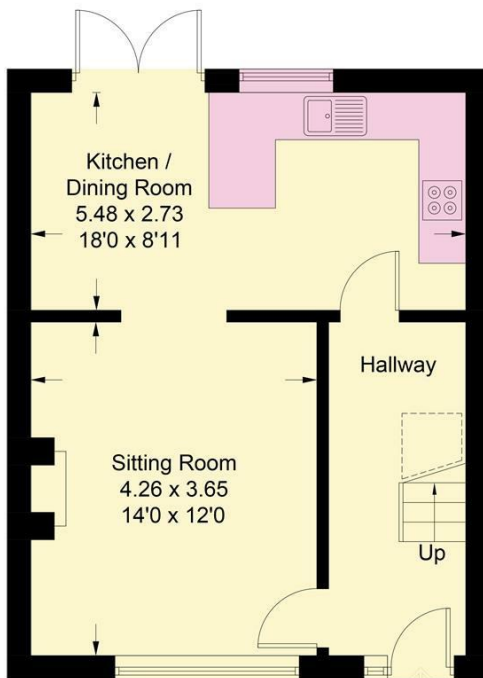
8'5" x 7'8" (2.58 x 2.35)

The Pasture, Ashford, TN24

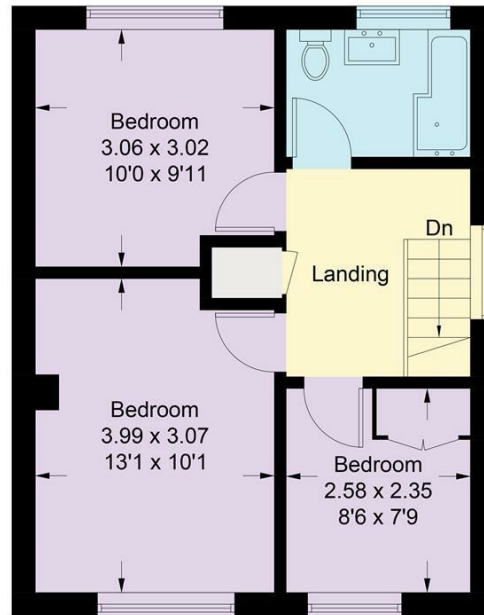
Approximate Gross Internal Area = 80.3 sq m / 864 sq ft



 = Reduced headroom below 1.5m / 5'0

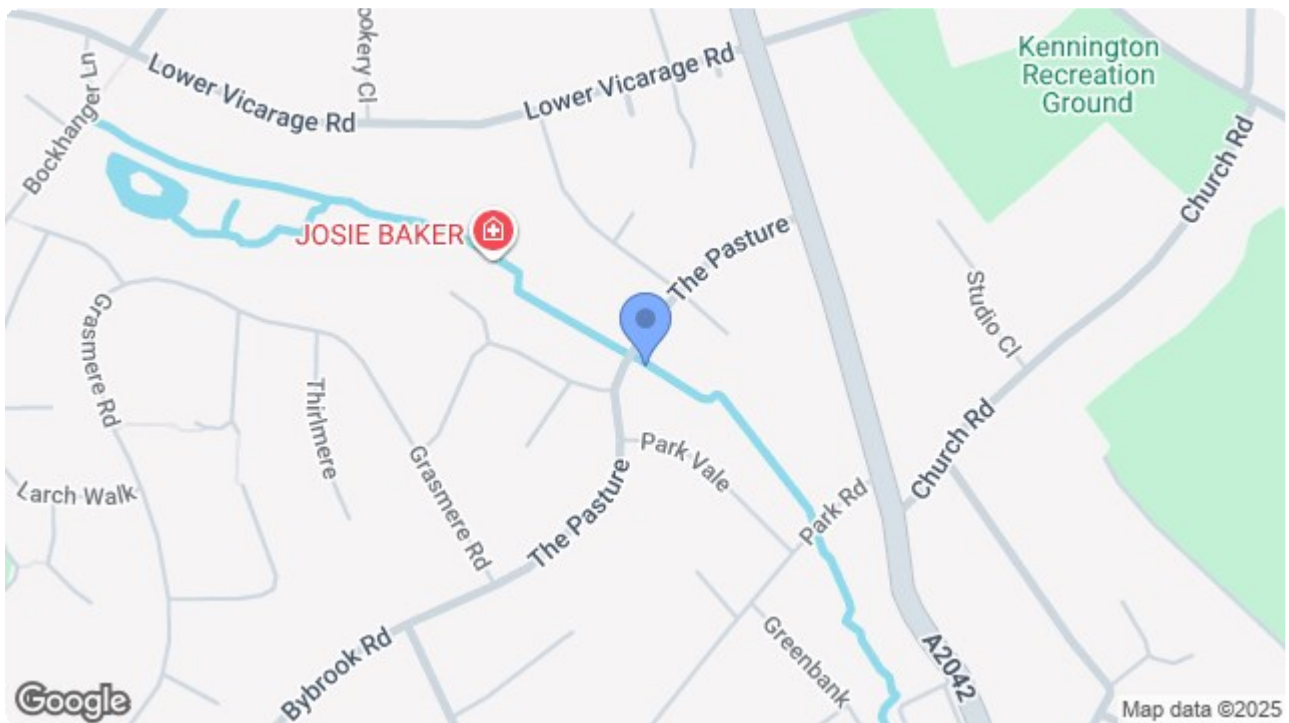



Ground Floor




First Floor

Illustration for identification purposes only, measurements are approximate, not to scale. Fourlabs.co © (ID1235127)



Energy Efficiency Rating		Current	Potential
Very energy efficient - lower running costs			
(92 plus) A			
(81-91) B			
(69-80) C			
(55-68) D			
(39-54) E			
(21-38) F			
(1-20) G			
Not energy efficient - higher running costs			
England & Wales		EU Directive 2002/91/EC	

Environmental Impact (CO ₂) Rating		Current	Potential
Very environmentally friendly - lower CO ₂ emissions			
(92 plus) A			
(81-91) B			
(69-80) C			
(55-68) D			
(39-54) E			
(21-38) F			
(1-20) G			
Not environmentally friendly - higher CO ₂ emissions			
England & Wales		EU Directive 2002/91/EC	

69 HIGH STREET, ASHFORD, KENT TN24 8SF

Tel: 01233 610444 www.martineestates.co.uk email: sales@martineestates.co.uk



Martine Estates Property Management Ltd
Registered in England and Wales No. 10031401
Registered office: 69 High Street, Ashford, Kent, TN24 8SF
Martins Wilkins T/A Martins Estates Sales and Lettings